



# Unicon Investment Solution

uniconSwift

Version 4.0  
(24 June 2011)

## Table of Contents

1.	How to Login in nest trader .....	2
2.	How to create New Market Watch .....	3
3.	How to add Scrip in Existing Market watch.....	4
4.	How to arrange Column header in Market watch .....	4
5.	How to change font and color in Market Watch .....	5
6.	How to Reconcile Reports Manually .....	5
7.	How to add alert for a Script .....	6
8.	How to see market depth.....	7
9.	How to place order.....	7
10.	How to see Order Book, Trade Book and Net Position .....	7
11.	How to see Holdings.....	9
12.	How to see Limits.....	9
13.	How to save your Trade/Order Report.....	10
14.	How to see charts .....	10
15.	How to see script property, Hourly statistics and Heat Map .....	11
16.	Description of Message Bar.....	12
17.	How to Transfer & Withdraw Fund.....	13
18.	How to use Forgot Password Option.....	14
19.	Important shortcut keys.....	16

## 1. How to Login in nest trader.

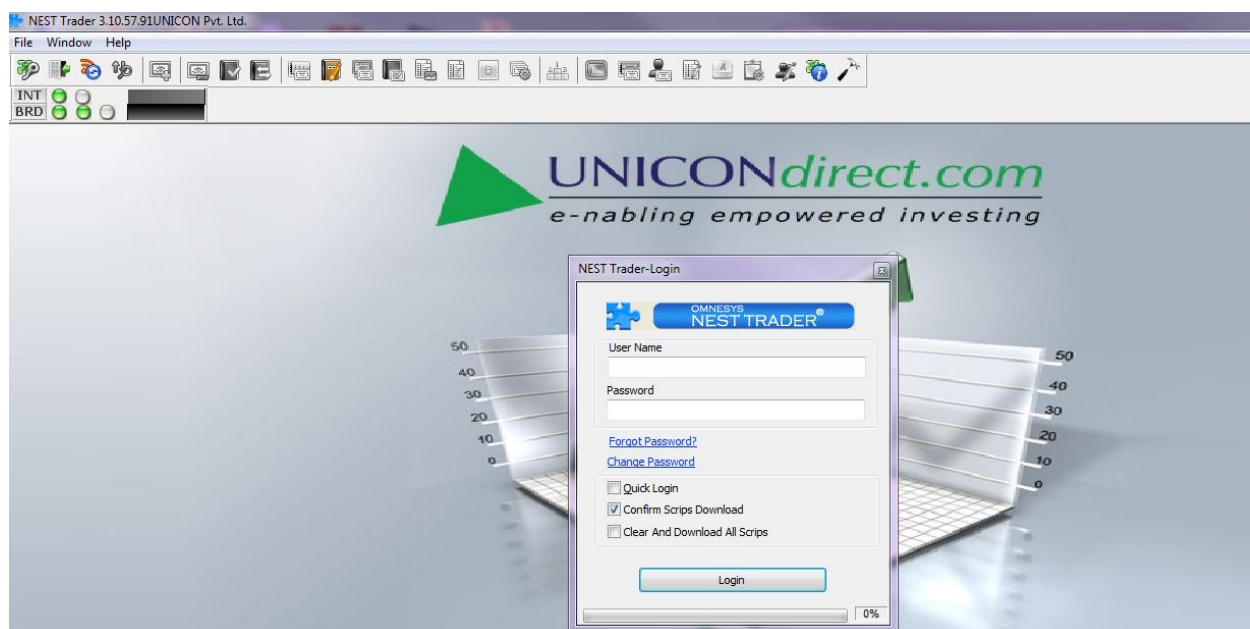
Double Click on Shortcut to uniconSwift on Desktop

Enter the login name and password in the respective fields provided.

Make sure that Confirm Scrip Download option are selected

Do not click on Quick Login.

Do not select **"Clear and Download All Scripts"** – This option is required if your security files get corrupted OR you are not getting newly listed scrip even after incremental download.



On first login attempt, it is mandatory to change the login password.

The password should be alphanumerical and should be 6 to 12 characters in length.

User cannot set the password same as last two passwords.

You need to change the login password and transaction password after every 14 days.

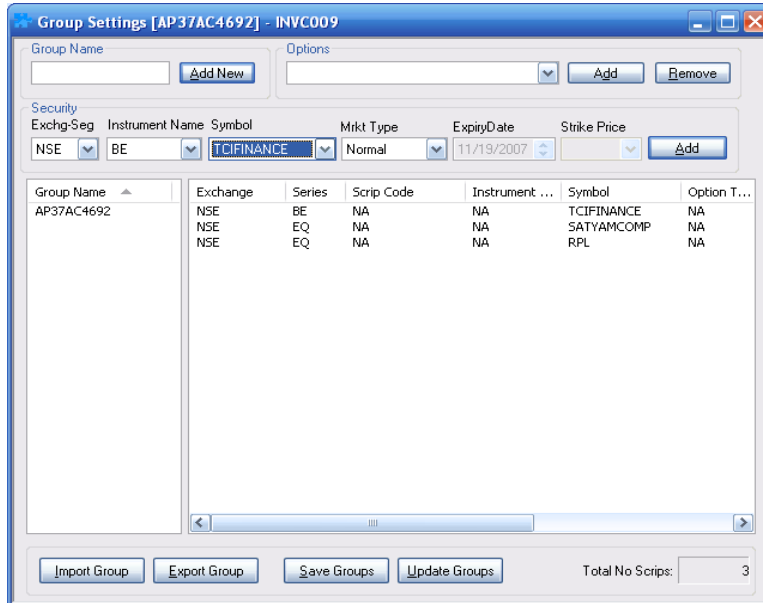
Once 14 days completed, the system mandates the change password option.

During login NEST Trader will automatically download the scrip master on Incremental basis.

## 2. How to create New Market Watch

Go to Market Menu > Market Watch Group settings.

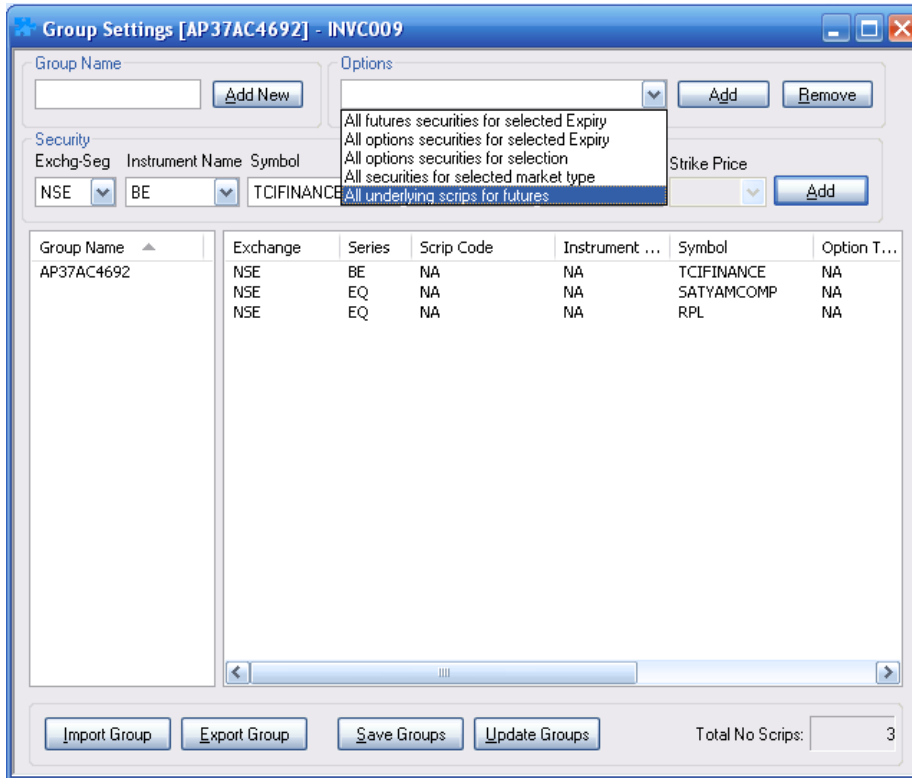
In the dialog box that appears enter group name and click on add group button. Then from Security options, select any of the security across exchange segments and say add. After adding the scrip, you can save the group by clicking on "Save Groups" button.



The trader has the options to add derivative symbols at one shot. The various options present are:

- All future securities for the selected expiry
- All option securities for the selected expiry (for selected scrip selected expiry)
- All option securities for the selection (for selected scrip across expiries)
- All underlying scrip for futures (Cash Underlying)
- All securities for selected market type (for NCDEX)

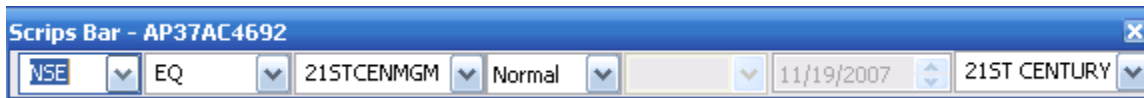
While adding future symbols using above mentioned options you have to select the proper expiry.



Click on save groups.

### 3. How to add Scrip in Existing Market watch

Press "CTRL + S", this will send the cursor focus in scrip bar.



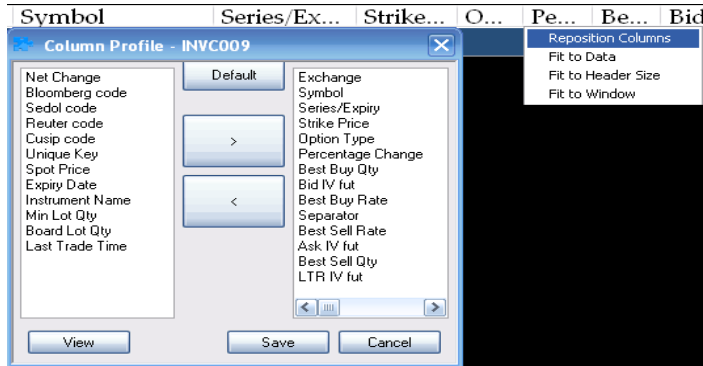
In scrip bar, select Series and Symbol and press enter. Once you type the company name the respective security symbol will be selected and you add it to market watch.

After adding scrip in market watch > Go to market watch group settings -> Save Groups.  
OR  
Press CTRL+M to Save Market watch

### 4. How to arrange Column header in Market watch

You can rearrange the market watch columns from "Repositions Column" option available on

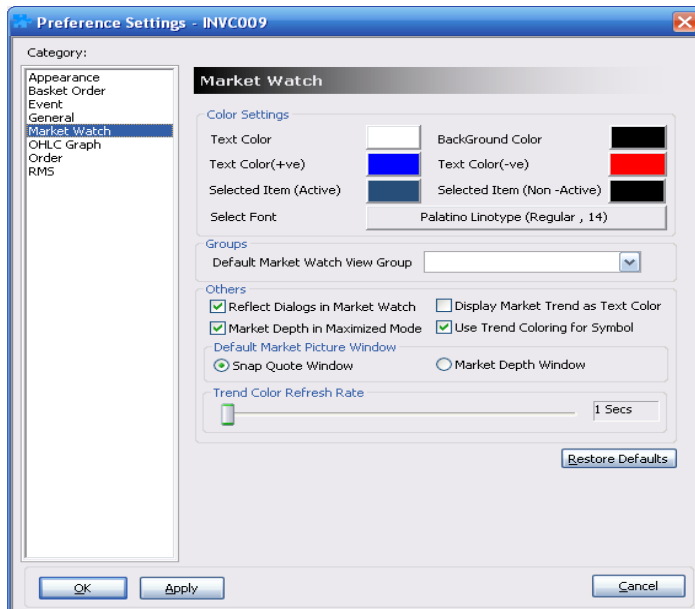
doing right click on market watch profile header (where you can see all the labels like exchange, symbol, best buy rate, etc.). From this dialog, you can select the columns you want to keep in market watch and click on save button.



From this window you can select the column that you want to display in market watch. By using arrow you can add or remove column to display list.

## 5. How to change font and color in Market Watch

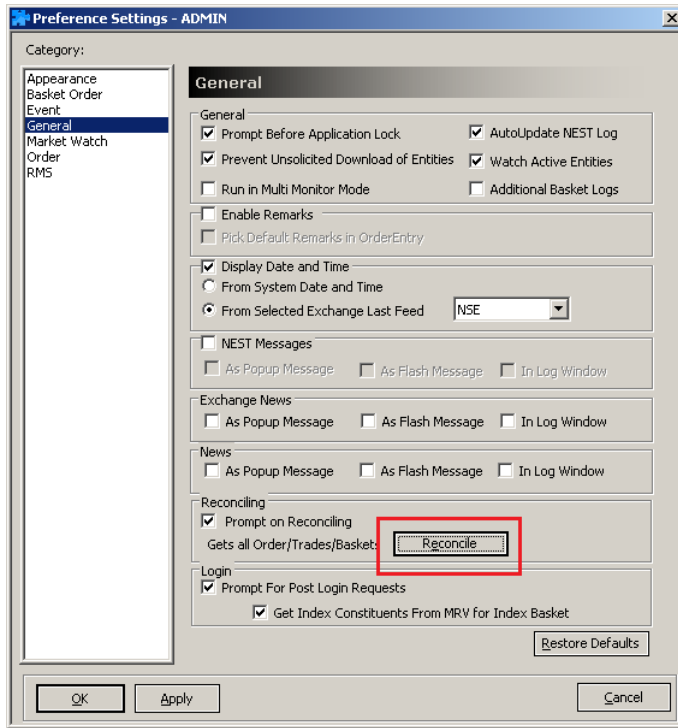
From Preferences (CTRL+P) -> Market Watch Settings category, you can set the color and font settings, default market watch group in market watch.



## 6. How to Reconcile Reports Manually

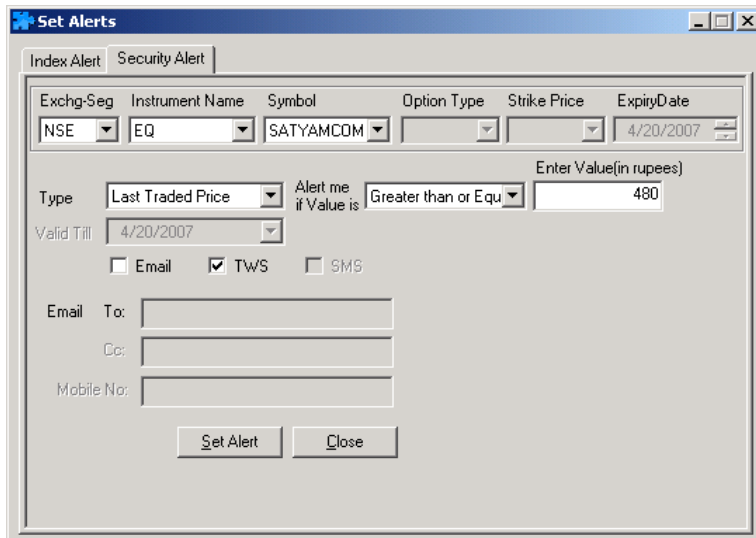
From Preferences (CTRL+P) -> General category, > Click on "Prompt on Reconciling" >

Click on Reconcile Button



## 7. How to add alert for a Script


Right click on market watch and select set alert option it will open a set alert dialog box through this you can set alert for a scrip or index.



### 8. How to see market depth

The market depth dialog shows the best-five information and other trade statistics.

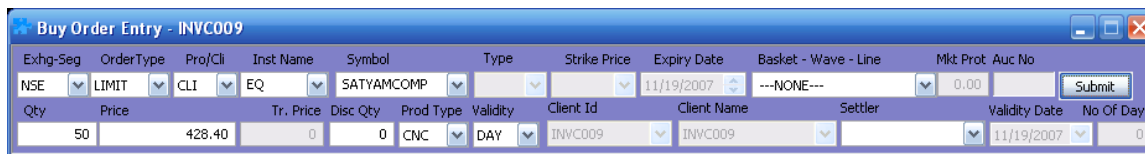
To open market depth double click on scrip or press F6.



NSE EQ SATYAMCOMP 11/19/2007						Display		Value: 3558.1946 Lacs	
1	10	429.15	429.20	2002	3	LTQty:	290 @429.15	Open:	431.05 Buy Carrying Cost: NA
3	294	429.00	429.25	95	2	ATP:	426.20	High:	436.95 Sell Carrying Cost: NA
1	300	428.85	429.35	25	1	Volume:	834865	Low:	423.15 Open Interest: NA
1	298	428.80	429.40	50	1	% Chg:	-0.07	Close:	429.45 Tot Open Interest: 5139600
1	599	428.75	429.45	29	2	UndLTP:	NA	Low Ckt Lim:	NA Upp Ckt Lim: NA
TBO:		73411	96649	:TSQ		CR Rating:	NA	Life Time High:	NA Life Time Low: NA
LTT:19Nov2007 13:28:10		LUT:19-Nov-2007 13:28:10							

### 9. How to place order

Order Entry is the screen from where you can place orders to the exchange. You can call this screen using F1/F2 or +/-, where F1/+ for Buy order entry and F2/- for Sell order entry



Exhg-Seg	OrderType	Pro/Cli	Inst Name	Symbol	Type	Strike Price	Expiry Date	Basket - Wave - Line	Mkt Prot	Auc No
NSE	LIMIT	CLI	EQ	SATYAMCOMP			11/19/2007	---NONE---	0.00	
Qty	Price	Tr. Price	Disc Qty	Prod Type	Validity	Client Id	Client Name	Settler	Validity Date	No Of Days
50	428.40	0	0	CNC	DAY	INVC009	INVC009		11/19/2007	0

**Note:** you have to enter the transaction password when you place order first time after login.  
When placing order please select product type NRML.

### 10. How to see Order Book, Trade Book and Net Position

In order book you can view the orders information for the trading day.  
To open order book go to Orders and Trades menu and select Order Book or press F3.

In NEST Trader you can filter in order book, trade book and net positions by calling CTRL+F.  
You can filter across the columns present in the dialog.

Order Book - INVC009

Open Orders: 2 Completed Orders: 2

Open Orders																
NestOrderNo	ExchangeOrderNo	Status	Exhg...	Requ...	Orde...	UserId	Pro/Cli	Accou...	Buy/Sell	Trading Symbol	Total...	Pendi...	Trad...	Price	Aver...	Discl.
71119000001454	2007111979933784	open	NSE	1	LIMIT	INVC009	CLI	INVC009	BUY	SATYAMCOMP-EQ	50	50	0	429.15	0.00	
71119000000957	2007111900007693	open	NSE	1	LIMIT	INVC009	CLI	INVC009	BUY	SATYAMCOMP-EQ	1	1	0	426.00	0.00	

Completed Orders																
NestOrderNo	Orde...	Status	Rejection Reason	Exhg...	R...	UserId	Pro/Cli	Accou...	Buy/Sell	Trading Symbol	Total...	Pendi...	Trad...	Price	Aver...	Discl.
71119000001455	LIMIT	complete		NSE	1	INVC009	CLI	INVC009	BUY	SATYAMCOMP-EQ	1	0	1	429.65	0.00	
71119000001456	LIMIT	complete		NSE	1	INVC009	CLI	INVC009	SELL	SATYAMCOMP-EQ	1	0	1	429.65	0.00	

Display Modify Cancel Cancel All

BQ : 51 BV : 21883.50 SV : 0.00 SQ : 0 NV : -21883.50 NQ : 51

Open orders window displays all pending orders and Completed orders window displays all orders except than pending orders.

In Trade book you can view all traded orders information for the trading day. To open order book go to Orders and Trades menu and select Trade Book or press F8.

Trade Book - INVC009

Total No. Of Trades : 2

Exhg...	UserId	Accou...	Buy/Sell	Symbol	Instr...	Strik...	Optio...	Expir...	Trade Status	Trade Date	Trade ...	Trad...	Trad...	Trad...	Pro/Cli	Strat...	Orde...
NSE	INVC009	INVC009	BUY	SATYAMCOMP	EQ				Trade confirmed	19-Nov-2007	22:09:09	429.65	1	112	CLI		LIMIT
NSE	INVC009	INVC009	SELL	SATYAMCOMP	EQ				Trade confirmed	19-Nov-2007	22:09:09	429.65	1	112	CLI		LIMIT

Display Position Conversion

BQ : 1 BV : 429.65 SV : 429.65 SQ : 1 B-ATP : 429.65 S-ATP : 429.65 NV : 0.00 NQ : 0

You can view the positions in Net Position dialog (ALT+F6). You can filter the positions by clicking on Change Filter button and then selecting the filter level.

Net Position - INVC009

Filters : Exchg:-ALL- | Symbol:-ALL- | Product:-ALL- | Account:INVC009 | Pro/Cli:-AL

Change Filter Refresh DayWise

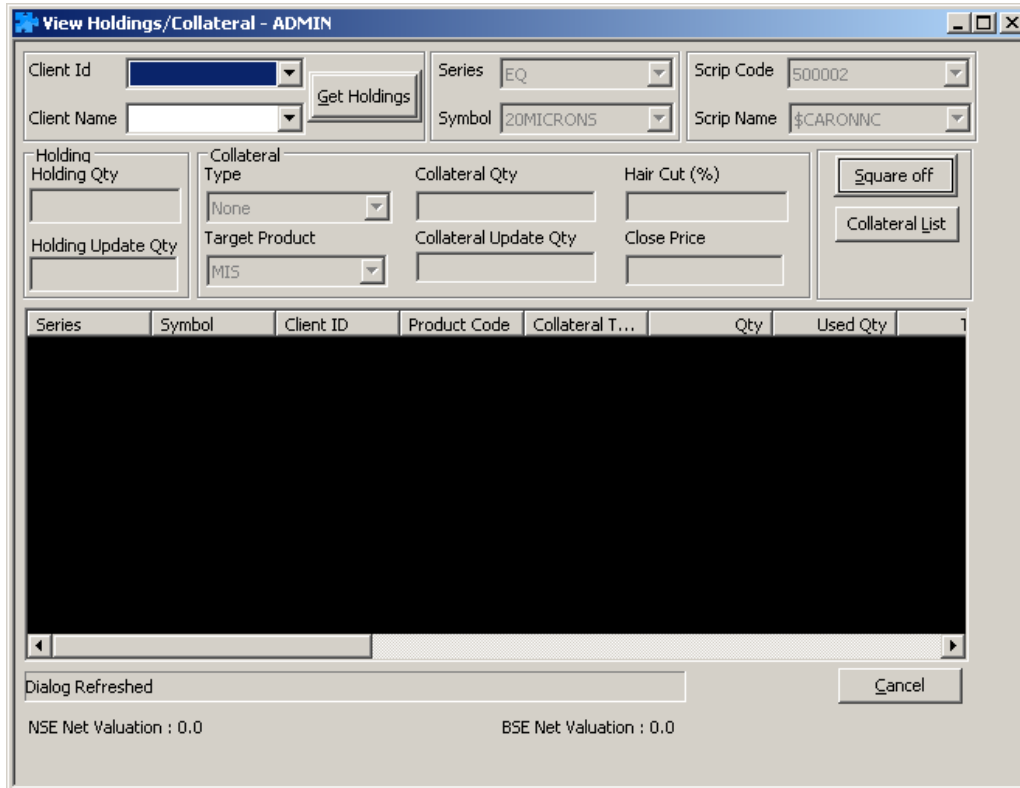
A...	Exch...	Symbol	Seri...	BuyQty	BuyA...	BuyValue	SellQty	SellA...	SellValue	NetQty	NetV...	BEP	LastT...	Mark...	Prod...	Client...	Squar...	Qty
INVC009	BSE	WIPRO	A	100	473.00	47300.00	100	473.00	47300.00				451.90		Product Type	net	Included	
INVC009	NSE	SATYAMCOMP	EQ	1	429.65	429.65	1	429.65	429.65				427.00		MIS	Internet	Included	
INVC009	NSE	RPL	EQ	100	211.35	21135.00				-100	21135.00	211.35	210.95	40.00	MIS	Internet	Included	
INVC009	NFO	NIFTY	29Nov2007	50	107.95	5397.50	50	107.95	5397.50				106.50		MIS	Internet	Included	

Option ALL Qty (%)

BQ : 151 BV : 53127.15 SV : 74262.15 SQ : 251 NET VAL : 21135.0 MTM : 55.00 NET QTY : -100

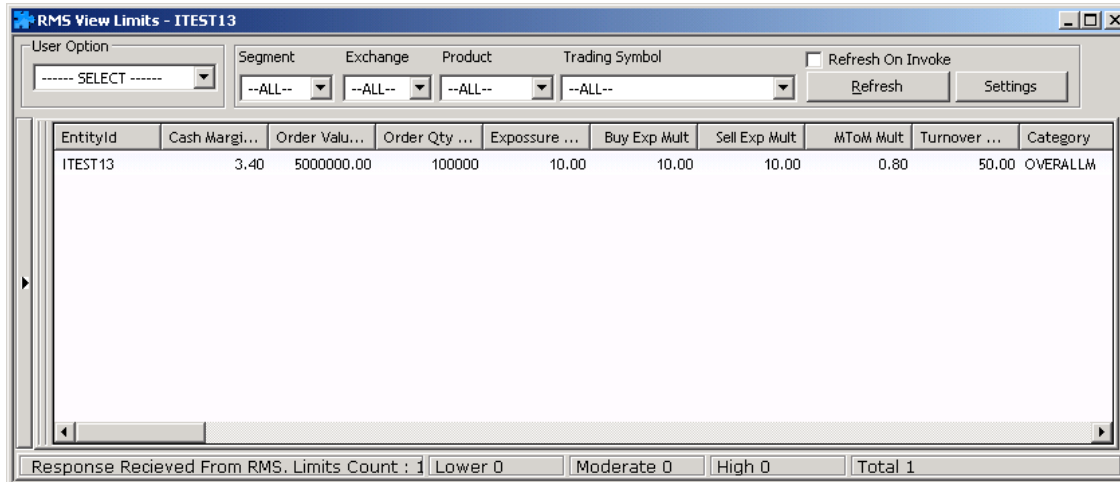
### 11. How to see Holdings

The DP holdings can be viewed in View DP holdings options present under Surveillance -> Holdings or press Alt+F9. You have to select the respective account id and click on get holdings, to get holdings details.



### 12. How to see Limits

The risk limits can be viewed from RMS view limits option present under Surveillance -> RMS Limits or press Ctrl+Shift+V. You can view the cash margin available / ledger balance, the exposure limits and the margin utilized.



EntityId	Cash Margi...	Order Valu...	Order Qty ...	Exposure ...	Buy Exp Mult	Sell Exp Mult	MToM Mult	Turnover ...	Category
ITEST13	3.40	5000000.00	100000	10.00	10.00	10.00	0.80	50.00	OVERALLM

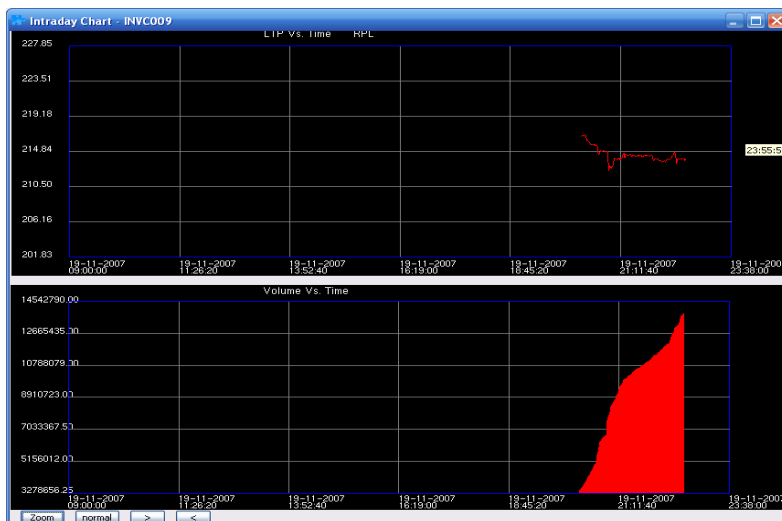
Response Received From RMS. Limits Count : 1 Lower 0 Moderate 0 High 0 Total 1

### 13. How to save your Trade/Order Report

The trade report can be generated from View report option present under Masters -> Report Generation. You have to select the exchange segment, client id and the respective report format. You have to mention the file location from Browse button and on clicking on Generate report; the trade report will be generated in the mentioned location.

### 14. How to see charts

There are two types of charts available in NEST Trader. Intraday Graph, which depicts the intraday chart for selected scrip from market. This can be called from Intraday Chart option on right click menu on market watch.

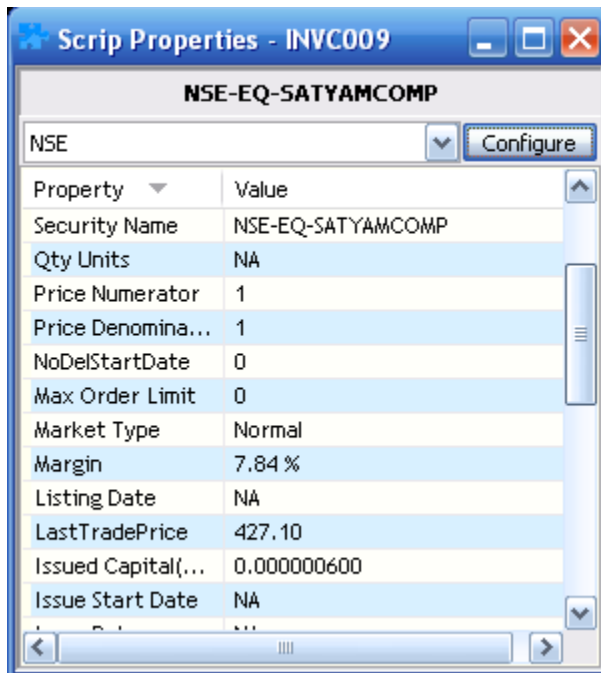


OHLC Graph, also an intraday graph which depicts the charts based on VWAP (Volume Weighted Average Price) at any point of time.



### 15. How to see scrip property, Hourly statistics and Heat Map

You can view the scrip properties / information of the selected scrip in market watch by calling SHIFT+F7 or right click menu -> Tools -> Scrip Properties.



Property	Value
Security Name	NSE-EQ-SATYAMCOMP
Qty Units	NA
Price Numerator	1
Price Denomina...	1
NoDelStartDate	0
Max Order Limit	0
Market Type	Normal
Margin	7.84 %
Listing Date	NA
LastTradePrice	427.10
Issued Capital(...	0.000000600
Issue Start Date	NA

You can view the hourly statistics for scrip using Hourly statistics option under Market menu. You can view Open, High, Low, Close, Volume and VWAP (Volume Weighted Average Price) for every one hour. Also you can view the top-ten and bottom-ten scrip in terms of Trade Volume, Open Interest volume, Open Interest value and Percentage Change.

Exchg-Seg	Series	Symbol	Expiry Date	Opt Type	Strike Price				
NSE	EQ	SATYAMCOMP	4/20/2007			Get Statistics			
Vwap Value	Open Rate	Close Rate	High Rate	Low Rate	Start Time	End Time	Differential Vol	Cumulative Vol	
475.79	476.60	475.50	477.45	474.90	20Apr2007 14:00:00	20Apr2007 15:00:00	633461	6618720	
475.35	476.05	476.60	477.25	472.60	20Apr2007 13:00:00	20Apr2007 14:00:00	656784	5985259	
476.40	475.25	476.05	478.20	475.00	20Apr2007 12:00:00	20Apr2007 13:00:00	966898	5328475	
473.86	471.65	475.25	475.35	471.25	20Apr2007 11:00:00	20Apr2007 12:00:00	1126442	4361577	
469.54	466.00	471.65	473.50	465.00	20Apr2007 10:00:00	20Apr2007 11:00:00	3078556	3235135	
466.73	0.00	466.00	468.00	465.15	20Apr2007 09:58:00	20Apr2007 10:00:00	156579	156579	

Display Heat map is a feature to view the percentage change of all symbols present in specific market watch in ascending or descending order.

SASEKH	ITM	VIATARA	SEF	TEVEN	SHREERAJA	LAING	HOC	ISSAROD	CHENDESTAR	DEINILAM	VIPTANAN	WITTECH	EBDALA	BAJAJIND	SIEMENS	DEINABAU
14.67%	13.07%	11.73%	7.80%	7.50%	7.32%	6.79%	6.69%	5.55%	5.26%	5.20%	5.08%	5.04%	4.98%	4.89%	4.81%	4.66%
4.54%	4.53%	4.12%	4.01%	3.94%	3.45%	3.41%	3.38%	3.24%	3.21%	3.04%	2.99%	2.91%	2.76%	2.65%	2.49%	2.42%
2.32%	2.32%	2.31%	2.10%	2.06%	1.99%	1.94%	1.86%	1.85%	1.79%	1.77%	1.61%	1.53%	1.51%	1.50%	1.40%	1.15%
1.08%	1.03%	1.01%	0.87%	0.79%	0.72%	0.72%	0.70%	0.63%	0.57%	0.57%	0.56%	0.56%	0.52%	0.50%	0.38%	0.32%
0.18%	0.07%	0.05%	0.05%	0.00%	0.00%	0.00%	0.00%	0.00%	0.00%	0.00%	0.00%	0.00%	0.00%	0.00%	0.00%	0.00%
0.00%	0.00%	0.00%	0.00%	0.00%	0.00%	0.00%	0.00%	0.00%	0.00%	0.00%	0.00%	0.00%	0.00%	0.00%	0.00%	0.00%
0.00%	0.00%	0.00%	0.00%	0.00%	0.00%	0.00%	0.00%	0.00%	0.00%	0.00%	0.00%	0.00%	0.00%	0.00%	0.00%	0.00%
0.00%	0.00%	0.00%	0.00%	0.00%	0.00%	0.00%	0.00%	0.00%	0.00%	0.00%	0.00%	0.00%	0.00%	0.00%	0.00%	0.00%
0.00%	0.00%	0.00%	0.00%	0.00%	0.00%	0.00%	0.00%	0.00%	0.00%	0.00%	0.00%	0.00%	0.00%	0.00%	0.00%	0.00%
0.00%	0.00%	0.00%	0.00%	0.00%	0.00%	0.00%	0.00%	0.00%	0.00%	0.00%	0.00%	0.00%	0.00%	0.00%	0.00%	0.00%
0.00%	0.00%	0.00%	0.00%	0.00%	0.00%	0.00%	0.00%	0.00%	0.00%	0.00%	0.00%	0.00%	0.00%	0.00%	0.00%	0.00%
0.00%	0.00%	0.00%	0.00%	0.00%	0.00%	0.00%	0.00%	0.00%	0.00%	0.00%	0.00%	0.00%	0.00%	0.00%	0.00%	0.00%

### 16. Description of Message Bar

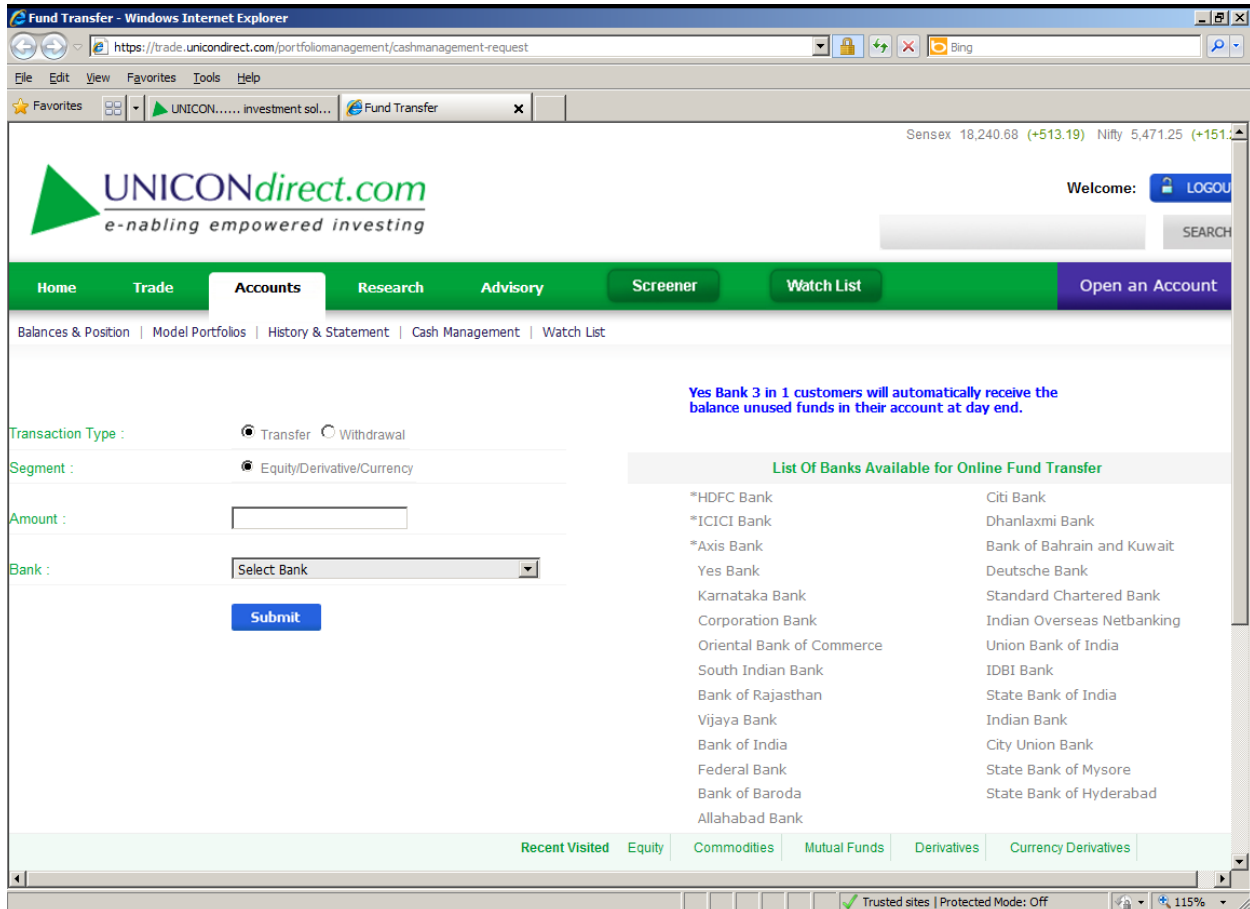
In Message bar, there are different tabs. In Session tab, all the session messages such as login sequence, orders and trades log and other events information. In Orders / Trades tab, only the orders and trades log will be shown. The News tab updates the live news messages across exchanges. The messages tab displays all the messages received from ADMIN. The log messages display the messages in between the login session. If you re-login to the trader you will not get the previous orders and trades messages. You can retrieve the same from server using "Get log messages" option from file menu.

## 17.How to Transfer & Withdraw Fund

You can transfer funds online with 26 banks.

To Transfer fund Go to > Web Links menu and select Cash Management it will open new Window.

From here you can transfer or withdraw fund.



The screenshot shows the UNICONdirect.com website interface for fund transfer. The page title is "Fund Transfer - Windows Internet Explorer" and the URL is "https://trade.unicondirect.com/portfoliomangement/cashmanagement-request". The website logo is "UNICONdirect.com e-nabling empowered investing". The navigation menu includes Home, Trade, Accounts (selected), Research, Advisory, Screener, Watch List, and Open an Account. The main content area shows a transaction form with the following fields:

- Transaction Type:  Transfer  Withdrawal
- Segment:  Equity/Derivative/Currency
- Amount:
- Bank:

A blue button labeled "Submit" is located below the form. To the right of the form, there is a section titled "List Of Banks Available for Online Fund Transfer" with a list of 26 banks:

- \*HDFC Bank
- \*ICICI Bank
- \*Axis Bank
- Yes Bank
- Karnataka Bank
- Corporation Bank
- Oriental Bank of Commerce
- South Indian Bank
- Bank of Rajasthan
- Vijaya Bank
- Bank of India
- Federal Bank
- Bank of Baroda
- Allahabad Bank
- Citi Bank
- Dhanlaxmi Bank
- Bank of Bahrain and Kuwait
- Deutsche Bank
- Standard Chartered Bank
- Indian Overseas Netbanking
- Union Bank of India
- IDBI Bank
- State Bank of India
- Indian Bank
- City Union Bank
- State Bank of Mysore
- State Bank of Hyderabad

At the bottom of the page, there is a navigation menu with links for Recent Visited, Equity, Commodities, Mutual Funds, Derivatives, and Currency Derivatives. The status bar at the bottom indicates "Trusted sites | Protected Mode: Off" and a zoom level of 115%.

Enter amount, select bank and then click on submit button it will redirect you to bank website. Enter net banking user id and password provided by bank. After successful transaction go to Balances&Positions to check fund.

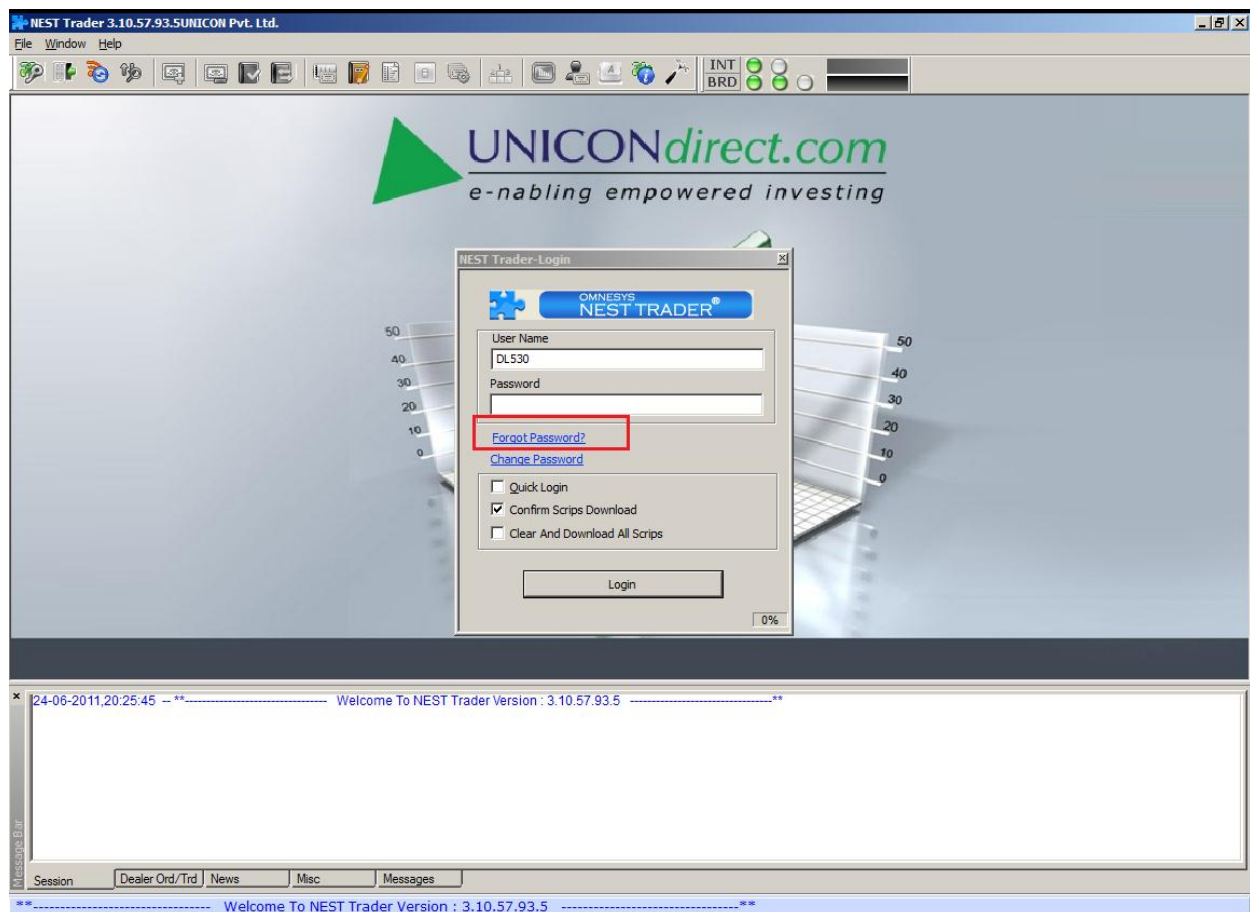
In case of withdrawal enter amount, select bank and click on submit button, your request is accepted in our records and it will be processed according to given condition.

### Important :-

- Funds can be transferred online from the above banks if you have the net banking facility enabled with the bank.
- As per SEBI Guidelines, the A/c No. from where the fund is being transferred for Trading must be registered with broker.
- To transfer funds from any other bank, please send a cheque for the margin amount to your branch or Contact your RM.
- To register account number or any assistance, please contact Unicon Helpdesk at +91-120-4515555 or 1800 103 3388 (Toll Free).
- \*You can request a direct transfer of funds in your account in HDFC, ICICI and Axis Bank Only.

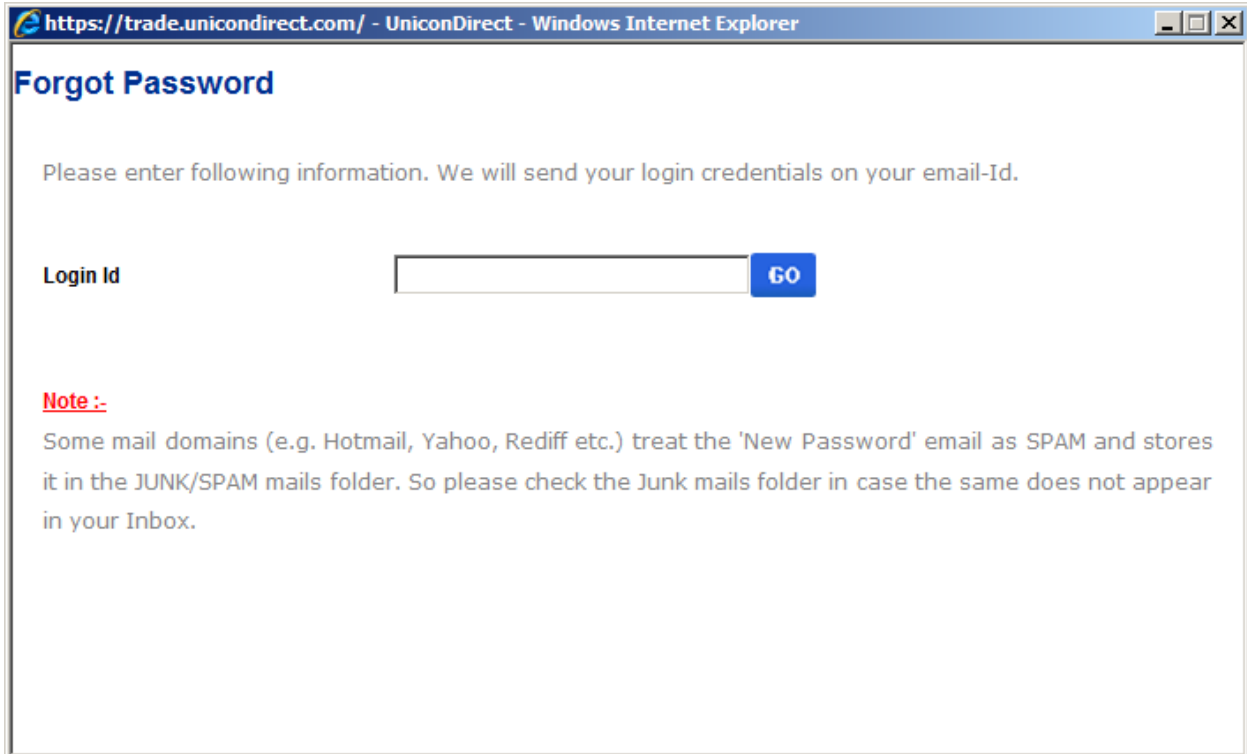
### 18.How to use Forgot Password Option

Double click on exe and click on Forgot Password option.



Click on Forgot Password option it will open given window.

Enter your login id click on go



https://trade.unicondirect.com/ - UniconDirect - Windows Internet Explorer

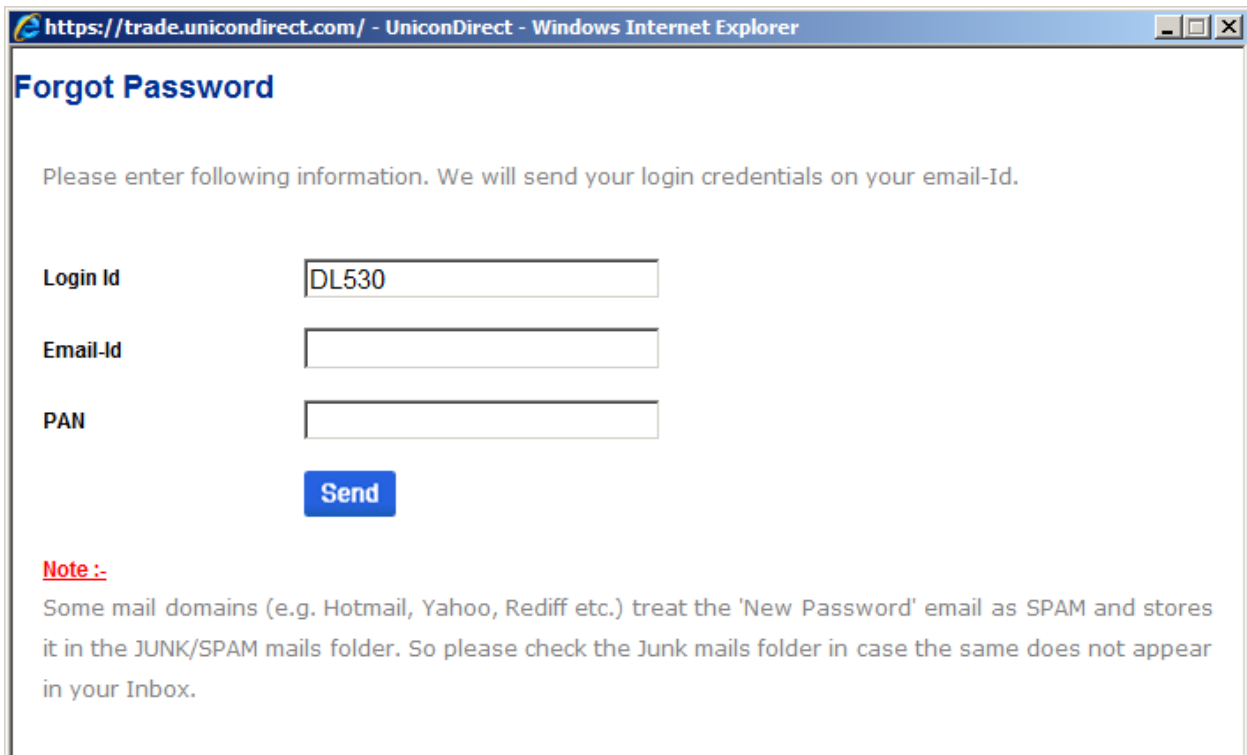
## Forgot Password

Please enter following information. We will send your login credentials on your email-Id.

Login Id

**Note :-**  
Some mail domains (e.g. Hotmail, Yahoo, Rediff etc.) treat the 'New Password' email as SPAM and stores it in the JUNK/SPAM mails folder. So please check the Junk mails folder in case the same does not appear in your Inbox.

Enter pan no, email id that is registered with us and click on send button.



https://trade.unicondirect.com/ - UniconDirect - Windows Internet Explorer

## Forgot Password

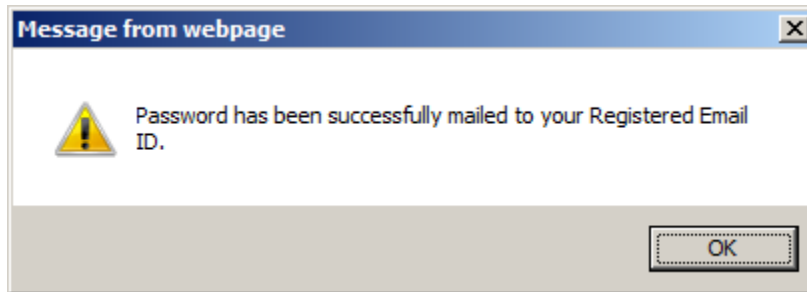
Please enter following information. We will send your login credentials on your email-Id.

Login Id

Email-Id

PAN

**Note :-**  
Some mail domains (e.g. Hotmail, Yahoo, Rediff etc.) treat the 'New Password' email as SPAM and stores it in the JUNK/SPAM mails folder. So please check the Junk mails folder in case the same does not appear in your Inbox.



Now check your mail id for new password.

### 19. Important shortcut keys

CONTROL + S -- go to security bar

INSERT –TO SPACE BETWEEN SCRIIP

CONTROL + m -- TO SAVE MKT WATCH

F6 -- MARKET DEPTH, BEST FIVE

F1, F2, +,- -- TO PLACE ORDER

CONTROL + I -- FOR INDEX BAR

F3- FOR ORDER BOOK

CONTROL +1 -- COMPLETED

CONTROL +2 -- PENDING

CONTROL +3 -- COMPLETED + PENDING

SHIFT F1-- CANCEL

SHIFT - F2 -- MODIFY

CONTROL = F -- TO FILTER DATA

F11 -- ALL NET POSITION

Shift + F7 – SECURITY DETAILS

CONTROL = B -- NORMAL BASKET